

RELEASE NOTES OF NEW FEATURES AND ENHANCEMENTS FOR TRIALDIRECTOR VERSION 6.2.896

PRESENTATION

Additional Layouts for Displaying Synchronized Video

- › **Closed Caption Layout** now provides the option to display transcript text below the video screen rather than on top of the video. To select this layout, access **Presentation Preferences** from the **View** menu, select the **Exhibits** tab and choose **ClosedCaption2**.

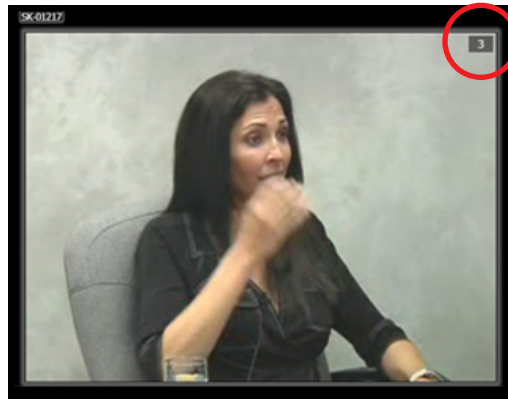


- › **Classic Layout** now provides the option to display up to 12 lines of transcript text below the video and choice of highlight color. To select this layout, access **Presentation Preferences** from the **View** menu, select the **Exhibits** tab and choose **Classic2**.



Video Clip Segment Indicator

A segment indicator is now available in the upper right corner of the video window.



To display the Segment indicator, access **Presentation Preferences** from the **View** menu, select the **Exhibits** tab, and choose **Show Segment Indicator** in the **General** section of the Digital Video Transcripts preferences. The segment indicator also can be turned on/off using the **SHIFT+CTRL+F12** keystroke combination.

Shortcut Segment Navigation Commands

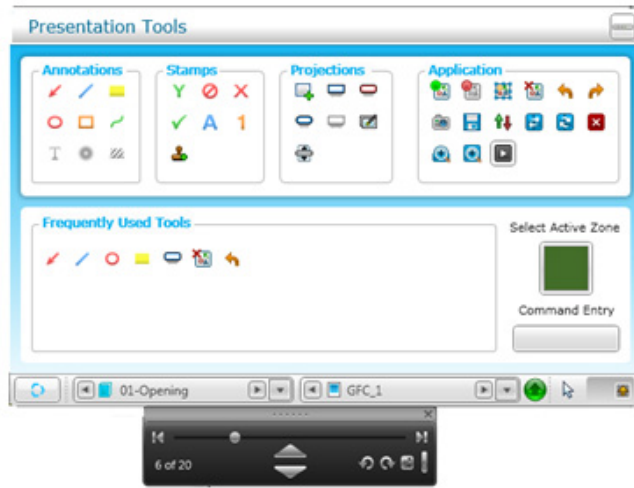
- › Use the **-SG** command to navigate to a specific segment (for example, -SG4).
- › Use the **-NS** command or the **SHIFT+F12** keystroke combination to move to the next segment in sequence.

Detached Tool Box Control

The new VCR control can be detached and moved to any location on any display. It can be used with documents, Synchronized Video Clips, Multimedia, Carousels and with the Detached Toolbar or Presentation Tools palette as shown below.

The new Detached Control Tool Box is also dynamic, automatically adjusting to the content type displayed in the selected zone.

To enable the Detached Tool Box, select the **Detached Tool Box** item  under the  toolbar button in Presentation mode.



Control Tool Box for PDF or Imaged Document, docked below Presentation Tools Palette



Control Tool Box for Multi-Segment Synchronized Video Clip



Control Tool Box for Multimedia

“Fit to Page Width” and “Fit to Full Page” Toolbar Buttons

Use these tools to quickly zoom to the top half of an image or display the full page. Both tools are found in the **Application Tool** section of the Presentation Toolbar




New “Fit to Page Width” and “Fit to Full Page” toolbar buttons

Shortcut to Last Page of a Document in Presentation Mode

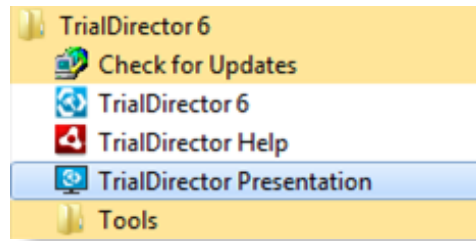
Use the **-PG999** command to immediately jump to the last page of a document in Presentation Preview or Presentation Mode.

Presentation Mode Icon on Windows Taskbar


Click this icon  to quickly switch focus to the full presentation screen. To close the Presentation Mode, right-click on the Presentation Mode icon in the Windows taskbar.

Presentation Link in Windows Start Menu

Direct access to Presentation Mode is now possible via a new shortcut available within the TrialDirector 6 Start Menu program group, as shown below.



Easier to Use Text Box Annotation Tool in Presentation Mode

The Text Box annotation tool  now opens in edit mode when placed on an image, graphic, document, video or synchronized video clip, allowing the user to immediately start typing text. The Text Box can be customized by choosing a text color prior to placement (right-click on the Text Box tool to access the color palette). When the text box is re-sized or line feeds are added, the font scaling adjusts automatically.

ALT+E Keystroke Dismisses Non-Redaction Annotations

When using the **ALT+E** keystroke in Presentation Preview or Presentation Mode, any redactions contained on the image remain intact while all other annotation types (highlights, arrows, ellipses, stamps, etc.) are immediately removed. Please note that annotations placed within active callout projection windows are not impacted by this command.

Multi-Play Workbooks Automatically Close Last Synchronized Video Clip or Multimedia Item

Multi-play workbooks now close the final Synchronized Video Clip or Multimedia Stream when the **Shutdown Behavior** for the respective item type is set to **Close** within the Presentation Preferences.

New Shortcuts for Navigating to a Specific Page/Line Range of a Synchronized Video Clip in Presentation Mode

- › **Keyboard Commands:** The **-PG** command is now recognized as a navigation tool by the Synchronized Video and Transcript presentation controls. Simply enter the page-line reference, separated by a period (or colon) to navigate. (Ex. -PG249.22)

- › **Point and Click Commands:** Users can now simply scroll down to a portion of the transcript they wish to access, double-click on a particular line and the synchronized video will immediately jump to that location. The user can then begin playback from that location by either double-clicking on the video window or via the play button within the Synchronized Video Control Toolbox.

Streamlined Admitting of Exhibits in Presentation Preview or Presentation Mode

An Admitted Workbook is now automatically created when creating a new case, which enables the Admit Exhibit commands (**-AD, -AE, ALT+Insert**) to automatically add new items to both the Admitted Workbook and the Coding database, if applicable.

Zone Mode and Push Zone Mode Function Keys Consistent with Previous TrialDirector Versions

The **F11** key now activates Push Zone Mode and **F12** activates Replace Zone Mode.

Ability to Pan Zoomed Document Using Arrow Keys

Improved Communications between the Main TrialDirector Module and Presentation Mode

Whether you change wired networks, disconnect from the network or a join wireless network, you can now expect IP communications between the main TrialDirector application and Presentation Mode to remain intact.

Caption Box Font Size Maintained While Navigating Documents

Improved Performance Navigating Documents via Page Up / Page Down Keys

Responsiveness to repetitive Page Up / Page Down keystrokes in Presentation mode is improved. TrialDirector displays blank (grey) pages as the user repetitively hits the Page Up / Page Down keys. Once the desired page is reached, the image is immediately displayed.

Optional Square-Corner Projection Callout Window

This new callout style will complement the existing Rounded, Capsule and Tear Out styles. Select the **Classic Projection Zoom** icon within the **Callout Zoom Type** menu.



Callout Zoom Type Menu

```
This firm represents William Harz, Hermine Gallup (Murphy)
and Greta Howorth (successor in interest to their mother, Letitia
Harz) in connection with the above-referenced location insured
under California Insurance Group Policy Nos. CMP 506018, CMP
502370 and SMP 447614. Our clients, owners of 3345 State Street
("the site") have asked us to notify you of their claim for
damage to the site resulting from the presence of hazardous
chemical compounds (PCE and TCE) found there but not placed on
the site either by them or by their tenant.
```

New Square-Corner Projection Callout Style

Improved Save Stage Zooms When Crossing Two Document Pages

When creating a Save Stage item containing a zoomed region that crosses over two document pages, the coordinates and zoom level information are now preserved more accurately.

Ability to Expand Zone via Keystroke in Mirror Mode

Users can now expand the active zone in both the Presentation Preview and Presentation Mode via the **SHIFT + Insert** keystroke when running Mirror Mode.

Updated Presentation Workbook Icons for Microsoft Office 2007-2010 Document Types

The appropriate icons for Microsoft Office 2007-2010 .XLSX / .DOCX / .PPTX file types now appear within the presentation workbooks.

Improved Performance When Dismissing an Image with Active Annotations within a Callout Projection Window

Memory utilization is improved within Presentation Preview and Presentation Mode when repeatedly dismissing images with active native annotations in a callout projection window.

Improved Performance Creating Save Stage Items

Users can now rapidly create Save Stage items without any application delays in Presentation Mode or the Workbooks Explorer.

Improved Performance Loading Large Page Count Documents with Pre-Treated Annotations

The time required to load PDF and TIFF documents with multiple pre-treated annotations in multi-page mode is reduced significantly. The pre-treated annotations can be saved on a single page or on all pages of a document.

Ability to View Uncompressed TIFF Images

TIFF image files without any type of compression (G3, G4, LZW, Huffman etc.) can now be viewed in Presentation Preview and Presentation Mode. However, it is still recommended that TIFF images be compressed to reduce file size and further improve performance.

Ability to View TIFF Images Using New JPEG Compression Formats

Improved Performance Loading and Playing Back Synchronized Video Clips with Large Numbers of Attached Exhibits

Improved Performance Loading Synchronized Video Clips

Improved Performance Loading Multimedia Items (MPEG, WMV, MP3, etc.)

Improved Performance Loading Text-Only Transcripts (aka Virtual Clips)

Improved Performance Loading Imaged Documents (TIFF, PDF & JPEG)

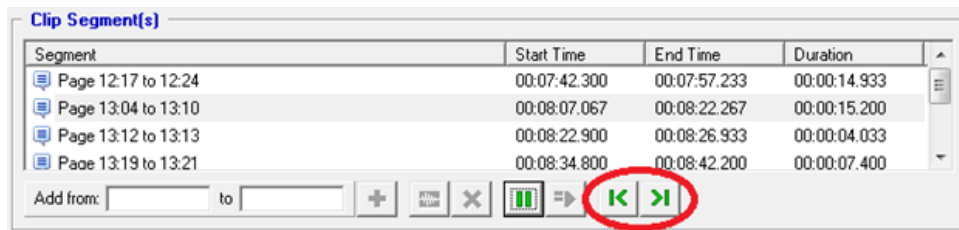
Improved Page Positioning when Navigating Documents in Multipage View

When using the **CTRL + Page Up / Page Down** keystrokes to navigate a document in side-by-side mode, the image loads in the center of the zone and automatically adjusts to the correct aspect ratio (letter, legal, landscape etc.) and orientation.

TRANSCRIPT MANAGER

New “Seek to Start” and “Seek to End” Buttons Added to Clip Editor

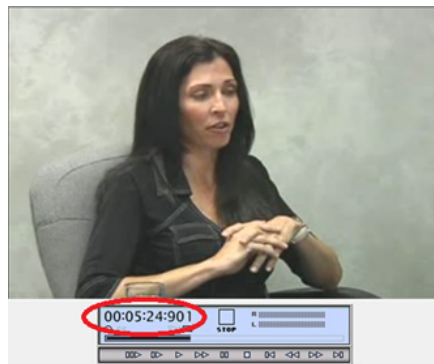
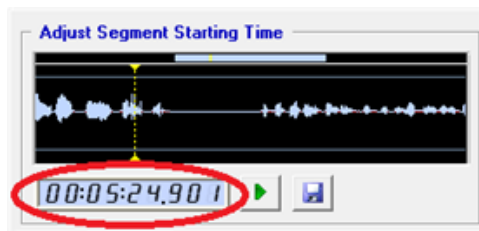
To quickly verify accurate clip beginning and endings, a user can select the **Seek to Start** button to jump to the beginning of the current clip segment and the **Seek to End** button to jump to a point 3 seconds prior to the end of the segment.



”Seek to Start” and “Seek to End” buttons within Clip Review tab

Visual Segment Editor (Audio) Now Synchronized with Video

When relocating the yellow dotted line to a new audio position in the Visual Segment Editor, the displayed video also seeks to the same location.



Ability to Automatically Adjustment Segment Start Times

This option is available through the **Adjust Start Time By** setting on the **Clips** tab of **Options**.

Improved Ability to Remove Attached Exhibits from a Transcript

Improved Accuracy of Timecode References when Attaching Exhibits

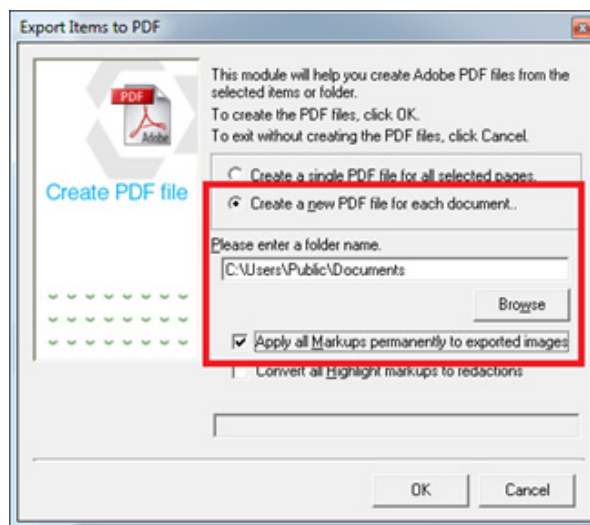
Ability to Scroll Text While Editing Clips

Users can now view scrolling transcript when using the Segment Editor. For example, when the user clicks the **Play** button for the segment end time, the text area automatically scrolls so the user can view the text associated with the end of the segment.

DOCUMENT MANAGER

Additional PDF Export Option

Users now have the option to create a single PDF file for all selected pages or to maintain the existing workbook structure and create a separate PDF for each document by selecting **Create a new PDF file for each document** option.



EXAMPLE

The user wishes to export the witness folder which contains 14 items from eight documents. When the export is completed, eight unique PDF files are created.

Name	Date modified	Type	Size
DEMO00050.pdf	10/4/2010 12:48 PM	Adobe Acrobat Document	1,479 KB
DEMO00066.pdf	10/4/2010 12:48 PM	Adobe Acrobat Document	434 KB
DEMO00145.pdf	10/4/2010 12:48 PM	Adobe Acrobat Document	980 KB
DEMO00147.pdf	10/4/2010 12:48 PM	Adobe Acrobat Document	1,632 KB
DEMO00174.pdf	10/4/2010 12:48 PM	Adobe Acrobat Document	829 KB
DEMO00448.pdf	10/4/2010 12:48 PM	Adobe Acrobat Document	1,006 KB
EXHIBIT 293.pdf	10/4/2010 12:48 PM	Adobe Acrobat Document	743 KB
EXHIBIT 515.pdf	10/4/2010 12:48 PM	Adobe Acrobat Document	685 KB

Ability to Include Multimedia Items in Exports to PDF

When creating a PDF file with multimedia items, a frame capture from the video file will be used as a placeholder in the output PDF file. This functionality is now consistent with selected Synchronized Video Clips.

Improved Stability Drawing Annotations Under Windows Vista and Windows 7

Modified Keystrokes to Save Annotations and Revisions

SHIFT+CTRL+S saves annotations on the current image. **SHIFT+CTRL+R** saves annotations to a separate image revision, leaving the original image untouched.

Accurate Export of Pack & Go Items to the Default Location

When using the default “My Documents” path for the Pack & Go feature, all case databases, images, native documents and multimedia are now properly exported to the correct path.

Improved Functionality Printing Selected Items From the Document Manager Grid

Ability to View TimelineXpress (.TLF) Files

Improved Case Library Scrollbar Functionality

When using the scroll bar for the Case Library Explorer tree, users are now able to navigate past the top-most location after opening a case or modifying the contents of the tree.

INTEGRATION

iConect®

Users may now double-click on .CDS files downloaded from iConect to automatically add document image and coding data directly to a new or existing TrialDirector 6 case.

LiveNote™ 10, West LiveNote™ 2.0 and West Case Notebook™ 2.0

Users may now a) send LiveNote transcripts and annotations (transcript selections) directly to a new or existing TrialDirector 6 case, and b) automatically present LiveNote annotations as clips. Also, support for limited user accounts to send LiveNote annotations to Transcript Manager has been added.

AD Summation™

Document Manager now accurately detects which selected Summation records do not have any associated image files when using the **Get Summation Image Info** feature. This improvement prevents Document Manager from importing selected Summation records without a valid IMGINFO table entry.

UTILITIES

Ability to Batch Import Entire Directory of LiveNote™ PTF files

Simply launch the utility from the **Tools** menu, select a TrialDirector case and the folder containing the PTF transcripts.

Ability to Brand Footers on Multi-Page TIFF Files

The Image Brander utility will brand and sequence all pages of multi-page TIFF files when using the %N% token.

High Quality MPEG-1 Export Option Added to DVD Extractor and MPEG Video Transcript Utilities

This new output option will create MPEG-1 files using high resolution (720 x 480) video size, 4000Kbps video bitrate and a 224Kbps audio bitrate. This option is appropriate for creating high-quality MPEG-1 files from DVD-Video and MPEG-2 files. This option maintains the wide compatibility of the MPEG-1 format, while utilizing higher resolution and bitrates for a playback quality similar to DVD-Video.

